



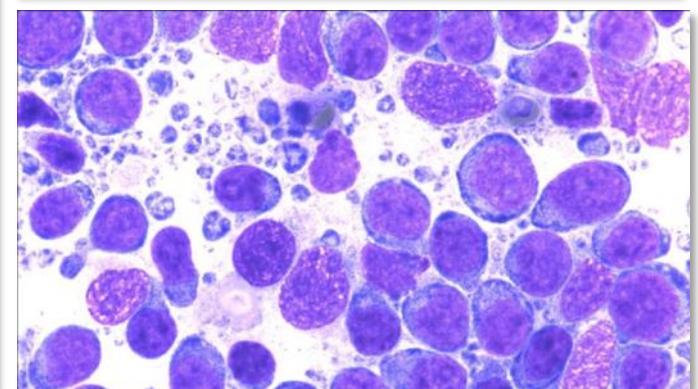
# WESTVET

Diagnostic Laboratory

## Quick Reference Guide

2015 - 2016

*Additional tests available;  
please call for more information.*



### WESTVET

5024 W. Chinden Blvd.  
Garden City, ID 83714  
[WestVet.net](http://WestVet.net)

Tel 208.375.1600  
Fax 208.375.1606  
Email [wvdlidaho@gmail.com](mailto:wvdlidaho@gmail.com)



# WESTVET

## Diagnostic Laboratory

*WestVet Diagnostic Laboratory has been serving Northwest veterinary hospitals since 2010. We are pleased to offer the services of two on-site board certified pathologists.*

Our mission is to provide the highest quality veterinary diagnostic laboratory services, including:

- Cytology
- Histopathology/Necropsy
- Blood Chemistry
- Hematology
- Endocrinology
- Urinalysis
- Parasitology
- Microbiology



**Elizabeth Cienava, DVM, DACVP**  
*Clinical Pathologist  
Laboratory Director*

In addition, FREE consultations are available with our board certified pathologists.

WestVet Diagnostic Lab provides:

- Rapid processing of samples (same day results for select tests)
- The opportunity to build personal relationships with our clinical and anatomic pathologists
- Small animal, equine, ruminant, avian and exotic diagnostics
- FREE courier service for most areas
- Discounted shipping



**Katherine Gailbreath, DVM, PhD, DACVP**  
*Anatomic Pathologist*

# WESTVET

5024 W. Chinden Blvd.  
Garden City, ID 83714

Ph 208.375.1600

Fax 208.375.1606

Email [wvdlidaho@gmail.com](mailto:wvdlidaho@gmail.com)

[WestVet.net](http://WestVet.net)

## WVDL General Profiles

Code	Diagnostic Test	Description	Specimen	Comments	Time	Price
100	Comprehensive Diagnostic Profile	Comprehensive Panel, CBC, Total T4 & Urinalysis	2 ml serum, LTT, 2 blood smears, 6 ml urine		daily	\$65.67
101	Wellness Profile Level 1	Comprehensive Panel & CBC	2 ml serum, LTT, 2 blood smears		daily	\$53.42
102	Wellness Profile Level 2	Comprehensive Panel, CBC & Total T4	2 ml serum, LTT, 2 blood smears		daily	\$57.88
110	Wellness Profile Level 3	Comprehensive Panel, CBC & Urinalysis	2 ml serum, LTT, 2 blood smears, 6 ml urine		daily	\$57.88
103	Canine Pediatric Profile	Screening Panel, CBC & Bile Acids (single sample)	2 ml serum, LTT, 2 blood smears		daily	\$55.65
104	Pre-op Profile	Pre-Anesthetic Panel & CBC	2 ml serum, LTT, 2 blood smears		daily	\$46.75
108	Large Animal Profile	Large Animal Panel & Large Animal CBC	2 ml serum, LTT, 2 blood smears		daily	\$57.88
109	Avian/Reptile Profile	Avian/Reptile Panel & Avian/Reptile CBC	M-GNTT or 6 Hep Cap & smears		daily	\$57.88

### Follow-up Profiles

150	Comprehensive Diagnostic Profile - Follow-up	Comprehensive Panel, CBC, Total T4 & Urinalysis	2 ml serum, LTT, 2 blood smears, 5 ml urine		daily	\$60.10
153	Wellness Profile Level 1 Follow-up	Comprehensive Panel & CBC	2 ml serum, LTT, 2 blood smears		daily	\$47.86
154	Wellness Profile Level 2 Follow-up	Comprehensive Panel, CBC & Total T4	2 ml serum, LTT, 2 blood smears		daily	\$52.31
155	Wellness Profile Level 3 Follow-up	Comprehensive Panel, CBC & Urinalysis	2 ml serum, LTT, 2 blood smears, 5 ml urine		daily	\$52.31
151	Large Animal Profile Follow-up	Large Animal Panel & Large Animal CBC	2 ml serum, LTT, 2 blood smears		daily	\$52.31
152	Avian/Reptile Profile Follow-up	Avian/Reptile Panel & Avian/Reptile CBC	M-GNTT or 6 Hep Cap & smears		daily	\$52.31

Follow-up profiles must be submitted within 30 days of the original sample.  
See page 3 for a list of analytes included in each chemistry panel.

## Add-on Tests to WVDL General Profiles

Code	Diagnostic Test	Description	Specimen	Comments	Time	Price
1500	Add-on Urinalysis	includes examination of physical, chemical, & microscopic properties	6 ml urine	sterile container preferred	daily	\$10.57
1501	Add-on Ova & Parasite	includes examination of physical & microscopic properties	10 g fresh feces	sterile container preferred	daily	\$5.57
1502	Add-on Heartworm Antigen	ELISA	2 ml serum		daily	\$4.45
1505	Add-on FeLV/FIV	ELISA	1.5 ml serum		daily	\$18.92
1507	Add-on Total T4	canine or feline	1 ml serum		daily	\$16.70
1508	Add-on Free T4	chemiluminescence canine or feline	2 ml serum		daily	\$21.15
1510	Add-on Bile Acids (single)	single sample	2 ml serum		daily	\$17.81
1511	Add-on Fructosamine	avoid hemolysis	2 ml serum		daily	\$23.37
1513	Add-on UPC (urine protein: creatine ratio)		6 ml urine	sterile container preferred	daily	\$22.26

## WVDL Chemistry Panels

Code	Diagnostic Test	Description	Specimen	Comments	Time	Price
200	Comprehensive Panel	26 parameters	2 ml serum		daily	\$47.86
201	Screening Panel	19 parameters	2 ml serum		daily	\$45.63
202	Pre-Anesthetic Panel	12 parameters	2 ml serum		daily	\$43.41
203	Electrolytes Panel	7 parameters	2 ml serum		daily	\$34.50
204	Renal Panel	15 parameters	2 ml serum		daily	\$34.50
205	Liver Panel	12 parameters	pre and post samples 2 ml serum each	pre = fasting sample	daily	\$45.63
207	Large Animal Panel	22 parameters	2 ml serum		daily	\$45.63
208	Avian/Reptile Panel	19 parameters	M-GNTT or 6 Hep Cap		daily	\$45.63
210	Equine Muscle Panel	5 parameters	2 ml serum		daily	\$27.83

### Follow-up Panels

250	Comprehensive Panel Follow-up	26 parameters	2 ml serum		daily	\$42.29
251	Screening Panel Follow-up	19 parameters	2 ml serum		daily	\$40.07
252	Electrolytes Panel Follow-up	7 parameters	2 ml serum		daily	\$28.94
253	Renal Panel Follow-up	15 parameters	2 ml serum		daily	\$28.94
254	Liver Panel Follow-up	12 parameters	pre and post samples 2 ml serum each	pre = fasting sample	daily	\$40.07
255	Large Animal Panel Follow-up	22 parameters	2 ml serum		daily	\$40.07
256	Avian/Reptile Panel Follow-up	19 parameters	M-GNTT or 6 Hep Cap		daily	\$40.07

Follow-up panels must be submitted within 30 days of the original sample.

Individual chemistry analytes available for \$14 each.

## Chemistry Parameters

Comprehensive			Screening		Pre-Anesthetic		Electrolytes		Renal		Liver	
A:G	Alb	ALP	A:G	Alb	Alb	ALP	An Gap		A:G	Alb	Alb	ALP
ALT	Amyl	An Gap	ALP	ALT	ALT	BUN	Cl		An Gap	BUN	ALT	AST
AST	BUN	BUN:Cr	Amyl	BUN	BUN:Cr	Cl	K		BUN:Cr	Ca	Bile Acid (pre/post)	
Ca	Chol	CK	BUN:Cr	Ca	Creat	Glucose	Mg		Cl	Creat	Chol	GGT
Cl	Creat	GGT	Chol	Cl	K	Na	Na		Glob	K	Glucose	T. Bili
Glob	Glucose	K	Creat	Glob	Na:K	T. Prot	Na:K		Na	Na:K	T. Prot	Trigl
Mg	Na	Na:K	Glucose	K			TCO2		Phos	T. Prot		
Phos	T. Bili	T. Prot	Na	Na:K					TCO2			
TCO2	Trigl		Phos	T. Bili								
			T. Prot									

Large Animal			Avian Reptile			Equine Muscle
A:G	Alb	ALP	A:G	Alb	Amyl	Alb
An Gap	AST	BUN	AST	AST	Bile Acids	AST
BUN:Cr	Ca	Chol	Ca	Ca:Phos	Chol	CK
CK	Cl	Creat	CK	Cl	GGT	Creat
GGT	Glob	Glucose	Glob	Glucose	K	LDH
K	Mg	Na	Na	Na:K	Phos	
Phos	T. Bili	T. Prot	T. Prot	Trigl	Uric Acid	
TCO2						

# Hematology

Code	Diagnostic Test	Description	Specimen	Comments	Time	Price
301	CBC Comprehensive	includes CBC, manual WBC diff., platelet count/estimate & blood smear review. Reticulocyte count if Hct: <30% (dogs) or <28% (cats)	1 ml LTT & 2 blood smears	Blood smear reviewed by pathologist if indicated by criteria/technician	daily	\$18.92
302	Platelet Count	machine count plus platelet estimation from smear	1 ml LTT & 2 blood smears		daily	\$14.47
303	Buffy Coat Smear	by pathologist	1 ml LTT		daily	\$38.96
304	Coombs Test*		1 ml LTT		1-2 working days	\$50.09
306	Blood Smear Review	by pathologist	1 ml LTT & 2 blood smears	CBC not included	daily	\$25.00
307	Manual Differential only	by technician	1 ml LTT & 2 blood smears		daily	\$11.13
311	Large Animal CBC Comprehensive	includes fibrinogen by heat precipitation	2 ml LTT & 2 blood smears		daily	\$28.94
312	Avian/Reptile CBC Comprehensive	includes WBC est. & diff., Hct, plasma protein, blood cell morphology, & parasite screen	M-GNTT or 6 Hep Cap & slides		daily	\$24.49

## Follow-up Hematology

350	CBC Comprehensive Follow-up	includes CBC, manual WBC diff., platelet count/estimate, blood smear review & reticulocyte count if Hct: <30% (dogs) or <28% (cats)	1 ml LTT & 2 blood smears		daily	\$13.36
351	Large Animal CBC Comprehensive Follow-up	includes fibrinogen by heat precipitation	2 ml LTT & 2 blood smears		daily	\$23.37
352	Avian/Reptile CBC Comprehensive Follow-up	includes WBC est. & diff., Hct, plasma protein, blood cell morphology, & parasite screen	M-GNTT or 6 Hep Cap & slides		daily	\$18.92

\*Send-out test

**Follow-up tests must be submitted within 30 days of the original sample.**

# Coagulation

Code	Diagnostic Test	Description	Specimen	Comment	Time	Price
400	PT and aPTT	see below	BTT	submission tube must be full**	daily	\$40.07
402	PT	see below	BTT	submission tube must be full**	daily	\$28.94
404	aPTT	see below	BTT	submission tube must be full**	daily	\$28.94
1515	Fibrinogen*	quantitative	BTT	submission tube must be full**	2-3 working days	\$48.77

\*Send-out test

**\*\* Citrate tubes provided by WVDL hold 2.7 mL of blood. Tubes filled with less than 2.0 mL whole blood have excess anticoagulant for the volume of blood which may affect the PT and aPTT results. For proper dilution, do not fill beyond the top of the tube label. If collecting a smaller volume of blood, blood to anticoagulant ratio should be 9:1.**

### PROTOCOL:

- 1) Draw fresh venous blood DIRECTLY into BTT until full. NO CLOTTING SHOULD BE OBSERVED IN THE TUBE.
- 2) Immediately invert BTT tube 8-10 times.
- 3) Avoid traumatic venipuncture, prolonged vessel occlusion, drawing blood into a dry syringe, incomplete blood draw, or air in vacutainer tubing. These conditions may activate, deplete or dilute coagulation factors.
- 4) Refrigerate whole blood sample (BTT) until submitting to the laboratory.
- 5) If delay in testing is greater than 24 hours, the BTT should be centrifuged for 10 to 15 minutes, plasma should be removed with a PLASTIC pipet or syringe and transferred into a PLASTIC transport tube. Plasma should be frozen until time of pick up or shipment and transported with a cold pack.

## Individual Tests

Code	Diagnostic Test	Description	Specimen	Comment	Time	Price
1301	Bile Acids Pre/Post		1ml serum per specimen	pre = fasting sample	daily	\$57.88
1300	Bile Acids Single Sample		2ml serum	fasting sample	daily	\$28.94
1303	BUN/Creatinine		2ml serum		daily	\$14.47
1304	Fructosamine		2ml serum	avoid hemolysis	daily	\$28.94
1305	Phenobarbital		2ml serum	RTT only avoid hemolysis	daily	\$35.62
1302	Bromide *		2ml serum	RTT only	1-2 working days	\$66.78
1306	Progesterone	chemiluminescence	2ml serum	RTT only	daily	\$54.54
1310	Progesterone Follow-up	chemiluminescence	2ml serum	RTT only	daily	\$38.96

\*Send-out test

## Urinary

Code	Diagnostic Test	Description	Specimen**	Comment	Time	Price
500	Urinalysis, Routine	exam of physical, chemical, & microscopic properties	6 ml urine	sterile container preferred	daily	\$21.15
551	Urinalysis, with Culture if Indicated†	exam of physical, chemical, & microscopic properties	6 ml urine	sterile container preferred	daily	\$21.15
550	Urinalysis, Follow-up	follow-up urinalysis must be submitted within 30 days	6 ml urine	sterile container preferred	daily	\$15.58
501	Urinalysis w/ Pathologist Review	stained cytologic exam of sediment by pathologist (recommended if abnormal cells detected on routine urinalysis)	6 ml urine	sterile container preferred	daily	\$30.00
502	Urine Protein:Creatinine Ratio (UPC)		2 ml urine	sterile container preferred	daily	\$38.96
503	Urinalysis w/ UPC††	UPC will be performed regardless of proteinuria	8 ml urine	sterile container preferred	daily	\$34.50
504	Urine Cortisol:Creatinine Ratio		6 ml urine	sterile container preferred	daily	\$44.52
505	Stone Analysis *		dry stones	sterile container preferred	14-21 working days	\$22.26

\*Send-out test

\*\*6-10mL of urine is the industry standard for urine sample submission. Short samples will be processed, but may result in falsely low numbers on the microscopic exam.

†Culture will be automatically ordered if any of the following criteria are met: WBCs > 5/hpf, bacteria are present, or USG < 1.015. See Microbiology section for urine culture pricing.

††Add-on UPC available (see code #1513 on page 2)

## Thyroid

Code	Diagnostic Test	Description	Specimen	Comment	Time	Price
700	Thyroid Panel Level One	Total T4 & free T4	2 ml serum		daily	\$61.22
701	Thyroid Panel Level Two	Total T4, TSH* & free T4 canine only	2 ml serum		daily	\$89.04
706	Thyroid Panel Level Three	Free T4 & TSH* canine only	2 ml serum		2-3 working days	\$72.35
702	Feline Hyperthyroid Recheck Panel	Total T4, BUN, Creatinine, CBC	2 ml serum & 2 ml LTT		daily	\$41.18
703	Total T4	canine or feline	2 ml serum		daily	\$27.83
704	Free T4	canine or feline	2ml serum		daily	\$38.96
705	TSH *	canine or feline	2 ml serum		2-3 working days	\$33.39

*\*Send-out test*

## Adrenal

Code	Diagnostic Test	Description	Specimen	Comment	Time	Price
800	ACTH Stimulation	pre & post cortisol level	1 ml serum per specimen		daily	\$58.99
801	Dexamethasone Suppression (pre & 8 hr post)	cortisol level pre-dex admin & 8 hr post-dex admin	1 ml serum per specimen		daily	\$58.99
802	Dexamethasone Suppression (pre, 4 hr & 8 hr post)	cortisol level pre-dex admin, 4 hr & 8 hr post-dex admin	1 ml serum per specimen		daily	\$75.68
803	Cortisol	single cortisol determination	1 ml serum		daily	\$42.29

## Microbiology

Code	Diagnostic Test	Description	Specimen	Comment	Time	Price
600	Urine Culture & Sensitivity	urine culture w/ 2 MICs	5 ml urine in sterile container	cystocentesis preferred	3-4 days	\$57.88
618	Follow-Up Urine Culture & Sensitivity	urine culture w/ 2 MICs	5 ml urine in sterile container	Please submit w/in 4 months of original	3-4 days	\$39.90
601	Aerobic Culture & Sensitivity	aerobic culture w/ 2 MICs	tissue, fluid or swab in sterile container		3-4 days	\$57.88
602	Aerobic/Anaerobic Culture & Sensitivity	aerobic culture w/ 2 MICs & anaerobic culture (ID only)	tissue, fluid or swab in sterile container		4-10 days	\$74.57
604	Fungal Culture - Dermatophyte only	includes identification to genus	hair, crust or scraping material submitted in a sterile container		14-21 days	\$53.42
627	Fungal Culture - Non-dermatophyte*	for culture of all fungi other than dermatophytes (includes dimorphic species)	tissue, fluid or swab in sterile container or culturette		14-21 days	\$53.42
621	Mycobacterium sp. Culture	For culture of non-Johne's Mycobacterium spp.	tissue, fluid or swab in sterile container or culturette		14-21 days	\$90.30
616	Blood Culture	includes aerobic and anaerobic sub-culture on days 2, 7 and 14.	2 blood culture bottles - inoculate each with 3-5 mls fresh blood collected from different sites at 30 min intervals	patient must be off antibiotics a minimum of 2 days prior to collection	14 days	\$89.04

\*Send-out test

## Parasitology/Fecal Testing

Code	Diagnostic Test	Description	Specimen	Comment	Time	Price
1000	Canine Heartworm Antigen	ELISA	2 ml serum		daily	\$11.13
1009	Feline Heartworm Antibody*	ELISA	2 ml serum		2-3 working days	\$65.10
1001	Feline Heartworm Antigen*	ELISA	2 ml serum		2-3 working days	\$53.42
1744	Feline Heartworm Panel Antibody and Antigen*	ELISAs	2 ml serum		2-3 working days	\$36.75
1002	Ova & Parasites	by zinc sulfate centrifugation	10 g fresh feces in sterile container		daily	\$20.50
1003	Ova & Parasite w/ Giardia	by zinc sulfate centrifugation & Giardia by ELISA	10 g fresh feces in sterile container		daily	\$30.98
1004	Giardia	ELISA	3-5 g fresh feces in sterile container		daily	\$13.36
1201	Parvovirus Antigen in Feces	SNAP test	3-5 g fresh feces in sterile container		daily	\$40.07
1008	Fecal Occult Blood		3-5 g fresh feces in sterile container		daily	\$22.02

\*Send-out test

## GI/Pancreatic\*

Code	Diagnostic Test	Description	Specimen	Comment	Time	Price
900	Cobalamin & Folate	canine or feline	2 ml serum	fasting sample	3-4 working days	\$85.70
901	Cobalamin, Folate & TLI	canine or feline	2 ml serum	fasting sample	3-4 working days	\$103.51
902	Cobalamin, Folate & PLI	canine or feline	2 ml serum	fasting sample	3-4 working days	\$103.51
903	Cobalamin, Folate, TLI & PLI	canine or feline	2 ml serum	fasting sample	3-4 working days	\$125.77
904	TLI & PLI	canine or feline	2 ml serum	fasting sample	3-4 working days	\$103.51
905	TLI	canine or feline	2 ml serum	fasting sample	3-4 working days	\$77.91
906	PLI	canine or feline	2 ml serum	fasting sample	3-4 working days	\$77.91
907	Cobalamin	canine or feline	2 ml serum	fasting sample	3-4 working days	\$77.91
908	Folate	canine or feline	2 ml serum	fasting sample	3-4 working days	\$103.51
910	fPL	feline	2 ml serum	SNAP test	daily	\$41.23
911	cPL	canine	2 ml serum	SNAP test	daily	\$48.34

\* All GI/Pancreatic tests are send-out tests except #s 910 and 911. PLI= Pancreatic Lipase Immunoreactivity, TLI=Trypsin-like Immunoreactivity.



## Tick-Borne Disease\*

Code	Diagnostic Test	Description	Specimen	Comment	Time	Price
1200	Tick Panel	<i>Ehrlichia canis</i> , <i>R. rickettsii</i> , <i>Anaplasma spp.</i> , <i>B. burgdorferi</i>	2 ml serum	please call for substitutions on tick panel	2-3 working days	\$100.17
1217	<i>Ehrlichia canis</i>	IFA (antibody test)	2 ml serum		2-3 working days	\$61.22
1202	<i>Neorickettsia risticii</i>	IFA (antibody test)	2 ml serum	formerly <i>Ehrlichia risticii</i>	2-3 working days	\$61.22
1203	<i>Anaplasma phagocytophilum</i>	IFA (antibody test)	2 ml serum	formerly <i>Ehrlichia equi</i>	2-3 working days	\$61.22
1204	<i>Rickettsia rickettsii</i> (Rocky Mountain Spotted Fever)	IFA (antibody test)	2 ml serum		2-3 working days	\$55.65
1205	<i>Babesia canis</i>	IFA (antibody test)	2 ml serum		2-3 working days	\$61.22
1206	<i>Babesia gibsoni</i>	IFA (antibody test)	2 ml serum	performed on Fridays only	up to 7 working days	\$77.91
1207	<i>Borrelia burgdorferi</i> - IFA (Lyme Disease)	IFA (antibody test)	2 ml serum		2-3 working days	\$55.65
1208	<i>Borellia burgdorferi</i> - WB (Lyme Disease)	Western Blot	2 ml serum		2-3 working days	\$62.33

\* All tick-borne disease tests are send-out tests

## Canine or Feline Fungal Disease\*

Code	Diagnostic Test	Description	Specimen	Comment	Time	Price
1209	Fungal Panel	coccidioidomycosis, blastomycosis, & histoplasmosis	2 ml serum		2-3 working days	\$86.81
1210	Coccidioidomycosis	AGID (antibody test)	2 ml serum		2-3 working days	\$46.75
1211	Blastomycosis	AGID (antibody test)	2 ml serum		2-3 working days	\$55.65
1212	Histoplasmosis	AGID (antibody test)	2 ml serum		2-3 working days	\$55.65
1213	Aspergillosis	AGID (antibody test)	2 ml serum		2-3 working days	\$55.65
1214	Cryptococcosis	latex agglutination (antigen test)	2 ml serum or 1 ml CSF		2-3 working days	\$66.78

\*All fungal tests are send-out tests.

## Feline Viral Disease

Code	Diagnostic Test	Description	Specimen	Comment	Time	Price
1100	FeLV Antigen	ELISA	2 ml serum		daily	\$23.37
1101	FeLV Antigen*	IFA	1 ml LTT or bone marrow		2-3 working days	\$55.65
1102	FIV Antibody	ELISA	2 ml serum		daily	\$23.37
1540	FIV Antibody*	Western Blot	2 ml serum RTT only		7-10 working days	\$50.09
1103	FeLV/FIV	ELISA	2 ml serum		daily	\$32.28
1104	FIP*	IFA	2 ml serum		2-3 working days	\$53.42

\*Send-out test

# Cytology

Code	Diagnostic Test	Description	Specimen	Comment	Time	Price
2000	Cytology w/ Description	1 site*	unstained slides preferred		daily	\$51.20
2005	Cytology w/o Description	1 site*	unstained slides preferred		daily	\$45.63
2050	Cytology - Additional Site w/Description	per additional site	unstained slides preferred		daily	\$35.62
2055	Cytology - Additional Site w/o Description	per additional site	unstained slides preferred		daily	\$30.10
2006	Wash Fluid	TTW, BAL, prostatic, other	LTT, slides, RTT (for culture <sup>†</sup> )	Includes cytologic evaluation	daily	\$54.54
2007	Fluid - Body Cavity	thoracic, abdominal, other	LTT, slides, RTT (for culture <sup>†</sup> )	Includes cytologic evaluation	daily	\$54.54
2053	Fluid - Body Cavity Additional Site	thoracic, abdominal, other	LTT, slides, RTT (for culture <sup>†</sup> )	Includes cytologic evaluation	daily	\$44.52
2008	Fluid-Synovial	1 site	LTT, slides, RTT (for culture <sup>†</sup> )	Includes cytologic evaluation	daily	\$54.54
2051	Fluid - Synovial Additional Site	per additional site	LTT, slides, RTT (for culture <sup>†</sup> )	Includes cytologic evaluation	daily	\$38.96
2009	CSF Analysis		LTT, slides, RTT (for culture <sup>†</sup> )	Includes cytologic evaluation	daily	\$57.88
2010	Bone Marrow		LTT, slides	Includes cytologic evaluation	daily	\$57.88

\* Cytology pricing includes one site with the exception of aspirates from multiple lymph nodes (up to 15 slides total).

<sup>†</sup> Culture not included - see Microbiology section on page 7 for culture pricing and submission details.

# Biopsy

Code	Diagnostic Test	Description	Specimen	Comment	Time	Price
3000	Biopsy - w/microscopic description	1 site (<5x5cm, 4 skin punches, 2 endoscopic sites)	fixed in 10% formalin at 1:10 dilution	Some samples may require extra processing time (i.e., bone and large soft tissue samples that are not fixed well). Additional fees may apply. See Code 3080.  Please contact the lab for detailed instructions on fixation and submission procedures for large or irregular samples including whole spleens.	2-3 working days	\$72.35
3001	Biopsy - w/o microscopic description	1 site (<5x5cm, 4 skin punches, 2 endoscopic sites)	fixed in 10% formalin at 1:10 dilution		2-3 working days	\$63.44
3006	Biopsy - Complex w/ microscopic description	>5x5cm, whole limb or organ, mandible/maxilla, up to 6 tissues from necropsy	fixed in 10% formalin at 1:10 dilution		2-3 working days	\$100.17
3007	Biopsy - Complex w/o microscopic description	>5x5cm, whole limb or organ, mandible/maxilla, up to 6 tissues from necropsy	fixed in 10% formalin at 1:10 dilution		2-3 working days	\$91.27
3050	Biopsy - Additional Sites	includes 4 additional skin punches and 2 additional endoscopic sites	fixed in 10% formalin at 1:10 dilution		2-3 working days	\$24.49
3080	Biopsy - Special Processing		Performed on processed tissue already submitted		5-7 working days	\$17.50

## Small Animal Necropsy

Code	Diagnostic Test	Description	Specimen	Comment	Time	Price
3022	Necropsy - Gross <1lb	Gross necropsy only - includes detailed written description, diagnoses & interpretation.	Please contact the laboratory for detailed instructions prior to submission to confirm pathologist availability.	Additional charges may apply for special cases requiring extra dissection or sampling (neurologic cases).  Necropsy prices do not include cadaver disposal. Private or communal cremation can be arranged upon request for an additional fee.	usually same day	\$183.09
3023	Necropsy - Gross 1-10 lbs				usually same day	\$219.71
3064	Necropsy - Gross 10-50 lbs				usually same day	\$256.33
3067	Necropsy - Gross >50 lbs				usually same day	\$292.94
3063	Necropsy - Gross Tissue Collection Only	Gross necropsy for tissue collection only - does <b>NOT</b> include detailed description, diagnoses or interpretation.			usually same day	\$99.40
3030	Necropsy - Histopathology Complete - Mini <1 lb	Histopathology on complete set of tissues collected during gross necropsy - includes description, diagnoses & interpretation			3 to 7 working days	\$159.02
3020	Necropsy - Histopathology Complete - Standard >1 lb				3 to 7 working days	\$259.47
3065	Necropsy - Histopathology Limited Tissues	Histopathology on select tissues collected during gross necropsy - includes description, diagnoses & interpretation			3 to 7 working days	\$131.11