

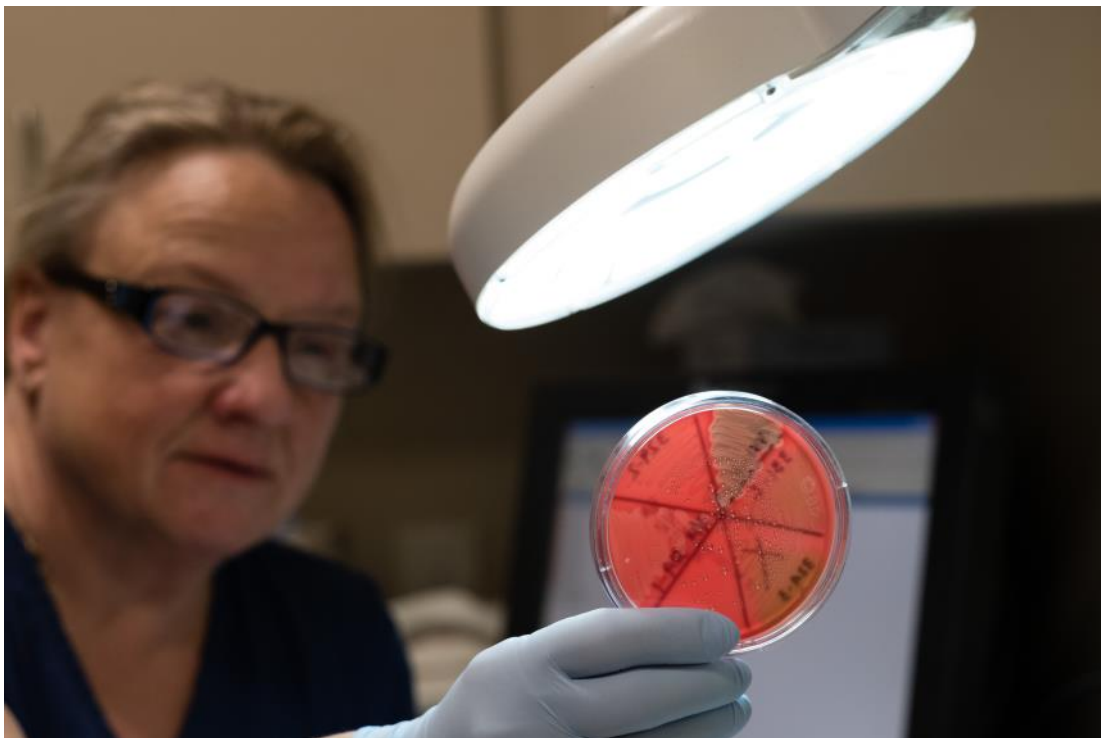


WESTVET

Diagnostic Laboratory

QUICK REFERENCE GUIDE

2017-2018



5024 W. Chinden Blvd.
Garden City, ID 83714

208.375.1600
westvet.net



WESTVET

Diagnostic Laboratory

WestVet Diagnostic Laboratory has been serving Northwest veterinary hospitals since 2010. We are pleased to offer the services of two on-site board certified pathologists.

Our mission is to provide the highest quality veterinary diagnostic laboratory services, including:

- Cytology
- Histopathology/Necropsy
- Blood Chemistry
- Hematology
- Endocrinology
- Urinalysis
- Parasitology
- Microbiology



[Elizabeth Cienava, DVM, DACVP](#)
Clinical Pathologist, Laboratory Director

In addition, FREE consultations are available with our board certified pathologists.

WestVet Diagnostic Lab provides:

- Rapid processing of samples (same day results for select tests)
- The opportunity to build personal relationships with our clinical and anatomic pathologists
- Small animal, equine, ruminant, avian and exotic diagnostics
- FREE courier service for most areas
- Discounted shipping in areas where courier service is not available



[Katherine Gailbreath, DVM, PhD, DACVP](#)
Anatomic Pathologist

WESTVET

5024 W. Chinden Blvd.
Garden City, ID 83714

Ph 208.375.1600
Fax 208.375.1606

email: wvdlidaho@gmail.com
web: WestVet.net



WESTVET

Diagnostic Laboratory

Index

General Profiles	2
Chemistry Panels	3
Hematology/Coagulation	4
Miscellaneous Serum Tests	5
Thyroid	5
Adrenal	5
Urinary	6
Microbiology	6
GI/Pancreatic	7
Parasitology/Fecal Testing	7
Tick-borne Disease	8
Fungal	8
Viral	8
Cytology	9
Biopsy	10
Necropsy	10
Large Animal Testing	11

Prices are subject to change at any time without prior notification.

If you are uncertain how a sample will be billed, please contact the lab prior to submission.

Additional tests are available; please call for more information.

General Profiles

Code	Diagnostic Test	Description	Specimen	Comments	Time
100	Comprehensive Diagnostic Profile	Comprehensive Panel, CBC, Total T4, Urinalysis	2 ml serum, LTT, 2 blood smears, 6 ml urine		daily
101	Wellness Profile Level 1	Comprehensive Panel, CBC	2 ml serum, LTT, 2 blood smears		daily
102	Wellness Profile Level 2	Comprehensive Panel, CBC, Total T4	2 ml serum, LTT, 2 blood smears		daily
110	Wellness Profile Level 3	Comprehensive Panel, CBC, Urinalysis	2 ml serum, LTT, 2 blood smears, 6 ml urine		daily
103	Canine Pediatric Profile	Screening Panel, CBC, Bile Acids (single sample)	2 ml serum, LTT, 2 blood smears		daily
104	Pre-op Profile	Pre-Anesthetic Panel, CBC	2 ml serum, LTT, 2 blood smears		daily
108	Large Animal Profile	Large Animal Panel, Large Animal CBC	2 ml serum, LTT, 2 blood smears		daily
109	Avian/Reptile Profile	Avian/Reptile Panel, Avian/Reptile CBC	M-GNTT or 6 Hep Cap & smears		daily

Follow-up Profiles

150	Comprehensive Diagnostic Profile - Follow-up	Comprehensive Panel, CBC, Total T4, Urinalysis	2 ml serum, LTT, 2 blood smears, 5 ml urine		daily
153	Wellness Profile Level 1 Follow-up	Comprehensive Panel, CBC	2 ml serum, LTT, 2 blood smears		daily
154	Wellness Profile Level 2 Follow-up	Comprehensive Panel, CBC, Total T4	2 ml serum, LTT, 2 blood smears		daily
155	Wellness Profile Level 3 Follow-up	Comprehensive Panel, CBC, Urinalysis	2 ml serum, LTT, 2 blood smears, 5 ml urine		daily
151	Large Animal Profile Follow-up	Large Animal Panel, Large Animal CBC	2 ml serum, LTT, 2 blood smears		daily
152	Avian/Reptile Profile Follow-up	Avian/Reptile Panel, Avian/Reptile CBC	M-GNTT or 6 Hep Cap & smears		daily

**Follow-up profiles must be submitted within 30 days of the original sample.
See page 3 for a list of analytes included in each chemistry panel.**

Add-on Tests to General Profiles

Code	Diagnostic Test	Description	Specimen	Comments	Time
1500	Add-on Urinalysis	includes examination of physical, chemical, & microscopic properties	6 ml urine	sterile container preferred	daily
1502	Add-on Heartworm Antigen	ELISA	2 ml serum		daily
1505	Add-on FeLV/FIV	ELISA	1.5 ml serum		daily
1507	Add-on Total T4	canine or feline	1 ml serum		daily
1508	Add-on Free T4	chemiluminescence canine or feline	2 ml serum		daily
1510	Add-on Bile Acids (single)	single sample	2 ml serum		daily
1511	Add-on Fructosamine	avoid hemolysis	2 ml serum		daily
1513	Add-on UPC (urine protein:creatinine ratio)		6 ml urine	sterile container preferred	daily

Chemistry Panels

Code	Diagnostic Test	Description	Specimen	Comments	Time
200	Comprehensive Panel	26 parameters	2 ml serum		daily
201	Screening Panel	19 parameters	2 ml serum		daily
202	Pre-Anesthetic Panel	12 parameters	2 ml serum		daily
203	Electrolytes Panel	7 parameters	2 ml serum		daily
204	Renal Panel	15 parameters	2 ml serum		daily
205	Liver Panel	12 parameters	pre and post samples 2 ml serum each	pre = fasting sample	daily
207	Large Animal Panel	22 parameters	2 ml serum		daily
208	Avian/Reptile Panel	19 parameters	M-GNTT or 6 Hep Cap		daily
210	Equine Muscle Panel	5 parameters	2 ml serum		daily

Follow-up Panels

250	Comprehensive Panel Follow-up	26 parameters	2 ml serum		daily
251	Screening Panel Follow-up	19 parameters	2 ml serum		daily
252	Electrolytes Panel Follow-up	7 parameters	2 ml serum		daily
253	Renal Panel Follow-up	15 parameters	2 ml serum		daily
254	Liver Panel Follow-up	12 parameters	pre and post samples 2 ml serum each	pre = fasting sample	daily
255	Large Animal Panel Follow-up	22 parameters	2 ml serum		daily
256	Avian/Reptile Panel Follow-up	19 parameters	M-GNTT or 6 Hep Cap		daily

**Follow-up profiles must be submitted within 30 days of the original sample.
Individual chemistry analytes available for \$15 each.**

Chemistry Parameters

Comprehensive			Screening		Pre-Anesthetic		Electrolytes	Renal		Liver	
A:G	Alb	ALP	A:G	Alb	Alb	ALP	An Gap	A:G	Alb	Alb	ALP
ALT	Amyl	An Gap	ALP	ALT	ALT	BUN	Cl	An Gap	BUN	ALT	AST
AST	BUN	BUN:Cr	Amyl	BUN	BUN:Cr	Cl	K	BUN:Cr	Ca	Bile Acid (pre/post)	
Ca	Chol	CK	BUN:Cr	Ca	Creat	Glucose	Mg	Cl	Creat	Chol	GGT
Cl	Creat	GGT	Chol	Cl	K	Na	Na	Glob	K	Glucose	T. Bili
Glob	Glucose	K	Creat	Glob	Na:K	T. Prot	Na:K	Na	Na:K	T. Prot	Trigl
Mg	Na	Na:K	Glucose	K			TCO2	Phos	T. Prot		
Phos	T. Bili	T. Prot	Na	Na:K				TCO2			
TCO2	Trigl		Phos	T. Bili							
			T. Prot								

Large Animal			Avian Reptile			Equine Muscle
A:G	Alb	ALP	A:G	Alb	Amyl	Alb
An Gap	AST	BUN	AST	AST	Bile Acids	AST
BUN:Cr	Ca	Chol	Ca	Ca:Phos	Chol	CK
CK	Cl	Creat	CK	Cl	GGT	Creat
GGT	Glob	Glucose	Glob	Glucose	K	LDH
K	Mg	Na	Na	Na:K	Phos	
Phos	T. Bili	T. Prot	T. Prot	Trigl	Uric Acid	
TCO2						

Hematology

Code	Diagnostic Test	Description	Specimen	Comments	Time
301	CBC Comprehensive	includes CBC, manual WBC diff., platelet count/estimate & blood smear review, reticulocyte count if Hct: <30% (dogs) or <28% (cats)	1 ml LTT & 2 blood smears	blood smear reviewed by pathologist if indicated by criteria/technician	daily
302	Platelet Count	machine count & platelet estimate from smear	1 ml LTT & 2 blood smears		daily
303	Buffy Coat Smear	by pathologist	1 ml LTT		daily
304	Coombs Test*		1 ml LTT		1-2 working days
306	Blood Smear Review	by pathologist	1 ml LTT & 2 blood smears	CBC not included	daily
307	Manual Differential only	by technician	1 ml LTT & 2 blood smears		daily
311	Large Animal CBC Comprehensive	includes fibrinogen by heat precipitation	2 ml LTT & 2 blood smears		daily
312	Avian/Reptile CBC Comprehensive	includes WBC est. & diff., Hct, plasma protein, blood cell morphology, & parasite screen	M-GNTT or 6 Hep Cap & slides		daily

Follow-up Hematology

350	CBC Comprehensive Follow-up	includes CBC, manual WBC diff., platelet count/estimate, blood smear review, reticulocyte count if Hct: <30% (dogs) or <28% (cats)	1 ml LTT & 2 blood smears		daily
351	Large Animal CBC Comprehensive Follow-up	includes fibrinogen by heat precipitation	2 ml LTT & 2 blood smears		daily
352	Avian/Reptile CBC Comprehensive Follow-up	includes WBC est. & diff., Hct, plasma protein, blood cell morphology, & parasite screen	M-GNTT or 6 Hep Cap & slides		daily

* Send-out test

Follow-up tests must be submitted within 30 days of the original sample.

Coagulation

Code	Diagnostic Test	Description	Specimen	Comment	Time
400	PT and aPTT	see below	BTT	submission tube must be full**	daily
402	PT	see below	BTT	submission tube must be full**	daily
404	aPTT	see below	BTT	submission tube must be full**	daily
1515	Fibrinogen*	quantitative	BTT	submission tube must be full**	2-3 working days

* Send-out test

**** Citrate tubes provided by WVDL hold 2.7 mL of blood. Tubes filled with less than 2.0 mL whole blood have excess anticoagulant for the volume of blood which may affect the PT and aPTT results. For proper dilution, do not fill beyond the top of the tube label. If collecting a smaller volume of blood, the blood to anticoagulant ratio should be 9:1.**

Collection Protocol for Coagulation Testing:

- 1) Draw fresh venous blood DIRECTLY into BTT until full. NO CLOTTING SHOULD BE OBSERVED IN THE TUBE.
- 2) Immediately invert BTT tube 8-10 times.
- 3) Avoid traumatic venipuncture, prolonged vessel occlusion, drawing blood into a dry syringe, incomplete blood draw, or air in vacutainer tubing. These conditions may activate, deplete or dilute coagulation factors.
- 4) Refrigerate whole blood sample (BTT) until submitting to the laboratory.
- 5) If delay in testing is greater than 24 hours, the BTT should be centrifuged for 10 to 15 minutes, plasma should be removed with a PLASTIC pipet or syringe and transferred into a PLASTIC transport tube. Plasma should be frozen until time of pick up or shipment and transported with a cold pack.

Miscellaneous Serum Tests

Code	Diagnostic Test	Description	Specimen	Comment	Time
1301	Bile Acids Pre/Post		2 ml serum per specimen	pre = fasting sample	daily
1300	Bile Acids Single Sample		2 ml serum	fasting sample	daily
1303	BUN/Creatinine		2 ml serum		daily
1304	Fructosamine		2 ml serum	avoid hemolysis	daily
1305	Phenobarbital		2 ml serum	RTT only avoid hemolysis	daily
1302	Bromide*		2 ml serum	RTT only	1-2 working days
1306	Progesterone	chemiluminescence	2 ml serum	RTT only	daily
1310	Progesterone Follow-up	chemiluminescence	2 ml serum	RTT only	daily

* Send-out test

Thyroid

Code	Diagnostic Test	Description	Specimen	Comment	Time
700	Thyroid Panel Level One	total T4, free T4	2 ml serum		daily
701	Thyroid Panel Level Two	total T4, TSH*, free T4	2 ml serum		daily
706	Thyroid Panel Level Three	free T4, TSH*	2 ml serum		2-3 working days
702	Feline Hyperthyroid Recheck Panel	total T4, BUN, creatinine, CBC	2 ml serum & 2 ml LTT		daily
703	Total T4	canine or feline	2 ml serum		daily
704	Free T4	canine or feline	2ml serum		daily
709	TSH*	canine or feline	2 ml serum		

* Send-out test

Adrenal

Code	Diagnostic Test	Description	Specimen	Comment	Time
800	ACTH Stimulation	pre & post cortisol level	1 ml serum per specimen		daily
801	Dexamethasone Suppression (pre & 8 hr post)	cortisol level pre-dex admin & 8 hr post-dex admin	1 ml serum per specimen		daily
802	Dexamethasone Suppression (pre, 4 hr & 8 hr post)	cortisol level pre-dex admin, 4 hr, 8 hr post-dex admin	1 ml serum per specimen		daily
803	Cortisol	single cortisol determination	1 ml serum		daily

Urinary

Code	Diagnostic Test	Description	Specimen**	Comment	Time
500	Urinalysis, Routine	exam of physical, chemical, & microscopic properties	6 ml urine	sterile container preferred	daily
551	Urinalysis, with Culture if Indicated†	exam of physical, chemical, & microscopic properties	6 ml urine	sterile container preferred	daily
550	Urinalysis, Follow-up	follow-up urinalysis must be submitted within 30 days	6 ml urine	sterile container preferred	daily
501	Urinalysis w/ Pathologist Review	stained cytologic exam of sediment by pathologist (recommended if abnormal cells detected on routine urinalysis)	6 ml urine	sterile container preferred	daily
502	Urine Protein:Creatinine Ratio (UPC)		2 ml urine	sterile container preferred	daily
503	Urinalysis w/ UPC††	UPC will be performed regardless of proteinuria	8 ml urine	sterile container preferred	daily
504	Urine Cortisol:Creatinine Ratio		6 ml urine	sterile container preferred	daily
505	Stone Analysis*		dry stones	sterile container preferred	14 — 21 working days

* Send-out test

** 6-10mL of urine is the industry standard for urine sample submission. Short samples will be processed, but may result in falsely low numbers on the microscopic exam.

† Culture will be automatically ordered if any of the following criteria are met: WBCs > 5/hpf, bacteria are present, or USG < 1.015. See Microbiology section for urine culture pricing.

†† Add-on UPC available (see code #1513 on page 2)

Microbiology

Code	Diagnostic Test	Description	Specimen	Comment	Time
600	Urine Culture & Sensitivity	urine culture w/ 2 MICs	5 ml urine in sterile container	cystocentesis preferred	3-4 days
618	Follow-Up Urine Culture & Sensitivity	urine culture w/ 2 MICs	5 ml urine in sterile container	please submit within 4 months of original	3-4 days
601	Aerobic Culture & Sensitivity	aerobic culture w/ 2 MICs	tissue, fluid, or swab in sterile container		3 - 4 days
602	Aerobic/Anaerobic Culture & Sensitivity	aerobic culture w/ 2 MICs & anaerobic culture (ID only)	tissue, fluid, or swab in sterile container		4 - 10 days
624	Aerobic Culture - Identification Only	aerobic culture ID only	tissue, fluid, or swab in sterile container		4 - 10 days
604	Dermatophyte Culture	culture on dermatophyte test media	hair, crust, or scraping material submitted in a sterile container	false positives can occur — definitive ID available for an additional fee	14 - 21 days
627	Fungal Culture - Non-Dermatophyte*	for culture of all fungi other than dermatophytes	tissue, fluid, or swab in sterile container or culturette		14 - 21 days
621	<i>Mycobacterium sp. Culture*</i>	for culture of non-Johne's <i>Mycobacterium spp.</i>	tissue, fluid, or swab in sterile container or culturette		14 - 21 days
616	Blood Culture	includes aerobic & anaerobic subculture on days 2, 7 & 14	2 blood culture bottles - inoculate each with 3 - 5 mls fresh blood collected from different sites at 30 min intervals	patient must be off antibiotics a minimum of 2 days prior to collection	14 days
662	Milk Culture	includes identification of <i>E. coli</i> & <i>Staphylococcus spp.</i> (to genus)	5 ml milk in sterile container	sensitivity testing available for an additional fee	3 - 4 days
614	Large Animal Fecal Culture	includes identification of <i>Salmonella spp.</i> & acid fast stain for <i>Cryptosporidium</i> , <i>Campylobacter</i> , & <i>Mycobacterium</i>	3 - 5g fresh feces in sterile container	sensitivity testing available for an additional fee	3 - 4 days

* Send-out test

GI/Pancreatic

Code	Diagnostic Test	Description	Specimen	Comment	Time
900	Cobalamin & Folate*	canine or feline	2 ml serum	fasting sample	3-4 working days
901	Cobalamin, Folate & TLI*	canine or feline	2 ml serum	fasting sample	3-4 working days
902	Cobalamin, Folate & PLI*	canine or feline	2 ml serum	fasting sample	3-4 working days
903	Cobalamin, Folate, TLI & PLI*	canine or feline	2 ml serum	fasting sample	3-4 working days
904	TLI & PLI*	canine or feline	2 ml serum	fasting sample	3-4 working days
905	TLI*	canine or feline	2 ml serum	fasting sample	3-4 working days
906	PLI*	canine or feline	2 ml serum	fasting sample	3-4 working days
907	Cobalamin (B12)*	canine or feline	2 ml serum	fasting sample	3-4 working days
908	Folate*	canine or feline	2 ml serum	fasting sample	3-4 working days
910	fPL	feline	2 ml serum	SNAP test	daily
911	cPL	canine	2 ml serum	SNAP test	daily

* Send-out test

PLI= Pancreatic Lipase Immunoreactivity, TLI=Trypsin-like Immunoreactivity

Parasitology/Fecal Testing

Code	Diagnostic Test	Description	Specimen	Comment	Time
1000	Canine Heartworm Antigen	ELISA	2 ml serum		daily
1009	Feline Heartworm Antibody*	ELISA	2 ml serum		2 - 3 working days
1001	Feline Heartworm Antigen*	ELISA	2 ml serum		2 - 3 working days
1744	Feline Heartworm Panel Antibody and Antigen*	ELISAs	2 ml serum		2 - 3 working days
1002	Ova & Parasites	by zinc sulfate centrifugation	10 g fresh feces in sterile container		daily
1003	Ova & Parasite w/ Giardia	by zinc sulfate centrifugation & Giardia by ELISA	10 g fresh feces in sterile container		daily
1012	Ova & Parasites w/ Count	by zinc sulfate centrifugation	10 g fresh feces in sterile container		daily
1004	Giardia	ELISA	3 - 5 g fresh feces in sterile container		daily
1201	Parvovirus Antigen in Feces	SNAP test	3 - 5 g fresh feces in sterile container		daily
1008	Fecal Occult Blood		3 - 5 g fresh feces in sterile container		daily

* Send-out test

Tick-Borne Disease*

Code	Diagnostic Test	Description	Specimen	Comment	Time
1200	Tick Panel	<i>Ehrlichia canis</i> , <i>R. rickettsii</i> , <i>Anaplasma spp.</i> , <i>B. burgdorferi</i>	2 ml serum	please call for substitutions	2-3 working days
1217	<i>Ehrlichia canis</i>	IFA (antibody test)	2 ml serum		2-3 working days
1202	<i>Neorickettsia risticii</i>	IFA (antibody test)	2 ml serum	formerly <i>Ehrlichia risticii</i>	2-3 working days
1203	<i>Anaplasma phagocytophilum</i>	IFA (antibody test)	2 ml serum	formerly <i>Ehrlichia equi</i>	2-3 working days
1204	<i>Rickettsia rickettsii</i> (Rocky Mountain Spotted Fever)	IFA (antibody test)	2 ml serum		2-3 working days
1205	<i>Babesia canis</i>	IFA (antibody test)	2 ml serum		2-3 working days
1206	<i>Babesia gibsoni</i>	IFA (antibody test)	2 ml serum	performed on Fridays only	up to 7 working days
1207	<i>Borrelia burgdorferi</i> - IFA (Lyme Disease)	IFA (antibody test)	2 ml serum		2-3 working days
1208	<i>Borrelia burgdorferi</i> - WB (Lyme Disease)	Western Blot	2 ml serum		2-3 working days

* All tick-borne disease tests are send-out tests

Canine or Feline Fungal Disease*

Code	Diagnostic Test	Description	Specimen	Comment	Time
1209	Fungal Panel	coccidioidomycosis, blastomycosis, & histoplasmosis	2 ml serum		2-3 working days
1210	Coccidioidomycosis	AGID (antibody test)	2 ml serum		2-3 working days
1211	Blastomycosis	AGID (antibody test)	2 ml serum		2-3 working days
1212	Histoplasmosis	AGID (antibody test)	2 ml serum		2-3 working days
1213	Aspergillosis	AGID (antibody test)	2 ml serum		2-3 working days
1214	Cryptococcosis	latex agglutination (antigen test)	2 ml serum or 1 ml CSF		2-3 working days

* All fungal tests are send-out tests

Feline Viral Disease

Code	Diagnostic Test	Description	Specimen	Comment	Time
1100	FeLV Antigen	ELISA	2 ml serum		daily
1101	FeLV Antigen*	IFA	1 ml LTT or bone marrow		2-3 working days
1102	FIV Antibody	ELISA	2 ml serum		daily
1540	FIV Antibody*	Western Blot	2 ml serum RTT only		7-10 working days
1103	FeLV/FIV	ELISA	2 ml serum		daily
1104	FIP*	IFA	2 ml serum		2-3 working days

* Send-out test

Cytology

Code	Diagnostic Test	Description	Specimen	Comment	Time
2000	Cytology w/ Description	1 site*	unstained slides preferred		daily
2005	Cytology w/o Description	1 site*	unstained slides preferred		daily
2050	Cytology - Additional Site w/ Description	per additional site	unstained slides preferred		daily
2056	Cytology - Additional Site w/o Description	per additional site	unstained slides preferred		daily
2006	Wash Fluid	TTW, BAL, prostatic, other	LTT, slides, RTT (for culture [†])	includes cytologic evaluation	daily
2007	Fluid - Body Cavity	thoracic, abdominal, other	LTT, slides, RTT (for culture [†])	includes cytologic evaluation	daily
2053	Fluid - Body Cavity Additional Site	thoracic, abdominal, other	LTT, slides, RTT (for culture [†])	includes cytologic evaluation	daily
2008	Fluid-Synovial	1 site	LTT, slides, RTT (for culture [†])	includes cytologic evaluation	daily
2051	Fluid - Synovial Additional Site	per additional site	LTT, slides, RTT (for culture [†])	includes cytologic evaluation	daily
2009	CSF Analysis		LTT, slides, RTT (for culture [†])	includes cytologic evaluation	daily
2010	Bone Marrow		LTT, slides	includes cytologic evaluation	daily

* Cytology pricing includes one site with the exception of aspirates from multiple lymph nodes (up to 15 slides total).

[†] Culture not included - see above for culture pricing and submission details.

Biopsy

Code	Diagnostic Test	Description	Specimen	Comment	Time
3000	Biopsy - with microscopic description	1 site (e.g. <5x5cm, 4 skin punches)	fixed in 10% formalin at 1:10 dilution	<p>Some samples may require extra processing time (i.e., bone & large soft tissue samples that are not fixed well).</p> <p>Additional fees may apply. (see code 3080)</p> <p>Please contact the lab for detailed instructions on fixation and submission procedures for large or irregular samples including whole spleens and whole limbs.</p>	2 - 3 working days
3001	Biopsy - without microscopic description	1 site (e.g. <5x5cm, 4 skin punches)	fixed in 10% formalin at 1:10 dilution		2 - 3 working days
3006	Biopsy - Complex with microscopic description	>5x5cm, whole limb or organ, mandible/maxilla, or up to 6 tissues from necropsy	fixed in 10% formalin at 1:10 dilution		2 - 3 working days
3007	Biopsy - Complex without microscopic description	>5x5cm, whole limb or organ, mandible/maxilla, or up to 6 tissues from necropsy	fixed in 10% formalin at 1:10 dilution		2 - 3 working days
3050	Biopsy - Additional Sites	includes 4 additional skin punches or 2 additional endoscopic sites	fixed in 10% formalin at 1:10 dilution		2 - 3 working days
3080	Biopsy - Special Processing	for samples requiring decalcification, extra dissection, or extra processing	performed on processed tissue already submitted		5 - 7 working days
3070	Biopsy - Liver Special Stain Panel	includes histopathology with trichrome, reticulin & copper stains	fixed in 10% formalin at 1:10 dilution		2 - 3 working days
3061	Biopsy - Liver Copper Panel	includes histopathology, copper stain, & copper quantitation	fixed in 10% formalin at 1:10 dilution		10 working days
3069	Biopsy - Liver Full Panel	includes histopathology, special stains (trichrome, ret+E294iculin & copper), & copper quantitation	fixed in 10% formalin at 1:10 dilution		10 working days
3049	Histopathology on Field Necropsy- Level 1	up to 5 necropsy tissues collected by the submitting veterinarian	fixed in 10% formalin at 1:10 dilution		<p>Necropsy tissue samples should be no thicker than 1 cm for optimal fixation.</p> <p>Rinse out intestinal contents in formalin for best results. (avoid touching mucosa)</p>
3073	Histopathology on Field Necropsy - Level 2	6-8 necropsy tissues collected by the submitting veterinarian	fixed in 10% formalin at 1:10 dilution	3 - 5 working days	
3075	Histopathology on Field Necropsy - Level 3	9-12 necropsy tissues collected by the submitting veterinarian	fixed in 10% formalin at 1:10 dilution	3 - 5 working days	

If you are uncertain how a biopsy will be billed, please contact the lab prior to submission.

Small Animal Necropsy

Code	Diagnostic Test	Description	Specimen	Comment	Time		
3022	Necropsy - Gross <1lb	gross necropsy only - includes detailed written description, diagnoses, & interpretation of gross lesions	Please contact the laboratory prior to submission for detailed instructions and to confirm pathologist availability.	Additional charges may apply for special cases requiring extra dissection or sampling (e.g., neurologic cases).	usually same day		
3023	Necropsy - Gross 1-10 lbs				usually same day		
3064	Necropsy - Gross 10-50 lbs				usually same day		
3067	Necropsy - Gross 50-100 lbs				usually same day		
3102	Necropsy - Gross >100 lbs				usually same day		
3030	Necropsy - Histopathology Complete - Mini <5 lbs	histopathology on complete set of tissues collected during gross necropsy —			Necropsy prices do not include cremation.	3 - 7 working days	
3020	Necropsy - Histopathology Complete - Standard >5 lbs	includes description, diagnoses, & interpretation of histologic lesions				A private or communal cremation fee must be paid at the time of submission.	3 - 7 working days
3065	Necropsy - Histopathology Limited Tissues	histopathology on select tissues collected during gross necropsy — includes description, diagnoses, & interpretation of histologic lesions				Please contact WestVet for pricing.	3 - 7 working days

Large Animal Testing

Code	Diagnostic Test	Description	Specimen	Comment	Time
108	Large Animal Profile	Large Animal CBC & Large Animal Panel	2 ml serum, LTT, 2 blood smears		daily
311	Large Animal CBC Comprehensive	includes fibrinogen by heat precipitation	2 ml LTT & 2 blood smears		daily
207	Large Animal Panel	22 parameters	2 ml serum		daily
210	Equine Muscle Panel	5 parameters	2 ml serum		daily
624	Aerobic Culture — Identification Only	aerobic culture ID only	tissue, fluid or swab in sterile container		3 - 4 days
601	Aerobic Culture & Sensitivity	aerobic culture w/ 2 MICs	tissue, fluid or swab in sterile container		3 - 4 days
602	Aerobic/Anaerobic Culture & Sensitivity	aerobic culture w/ 2 MICs & anaerobic culture (ID only)	tissue, fluid or swab in sterile container		5 - 10 days
634	<i>Mycoplasma bovis</i> culture	ID only	tissue, fluid or swab in sterile container		4 - 10 days
662	Milk Culture	includes identification of <i>E. coli</i> & <i>Staphylococcus spp.</i> (to genus)	5 ml milk in sterile container	sensitivity testing available for an additional fee	3 - 4 days
681	Milk Culture — additional samples	includes identification of <i>E. coli</i> & <i>Staphylococcus spp.</i> (to genus)	5 ml milk in sterile container	sensitivity testing available for an additional fee	3 - 4 days
614	Large Animal Fecal Culture	includes identification of <i>Salmonella spp.</i> & acid fast stain for <i>Cryptosporidium</i> , <i>Campylobacter</i> & <i>Mycobacterium</i>	3-5g fresh feces in sterile container	sensitivity testing available for an additional fee	3 - 4 days
648	Large Animal Fecal Culture — additional samples	includes identification of <i>Salmonella spp.</i> & acid fast stain for <i>Cryptosporidium</i> , <i>Campylobacter</i> & <i>Mycobacterium</i>	3-5g fresh feces in sterile container	sensitivity testing available for an additional fee	3 - 4 days
1324	Serum Calcium		2 ml serum		daily
1611	Beta-hydroxybutyrate (BHB)*	1-10 samples	2 ml serum	discounts available for >10 samples	2 - 3 working days
1608	Non-esterified Fatty Acids (NEFA)*	1-10 samples	2 ml serum	discounts available for >10 samples	2 - 3 working days

* Send-out test

We facilitate send-out testing for large and agriculture animals including:

- Viral and bacterial PCR including respiratory disease panels for cattle, horses, and pigs
- Fecal pathogen screening by PCR and ELISA
- Specialized cultures such as *Mycobacterium spp.*
- Toxicology and mineral screens
- Ionized calcium